



## SERVICE BULLETIN OSB 315-71

### I. TECHNICAL DETAILS

#### 1.1 Category:

Optional

#### 1.2 Aircraft affected:

GROB G 103 TWIN II	S/N 3501 – 3729
	S/N 3730 – 3878
	S/N 33879 – 34078
GROB G 103A TWIN II ACRO	S/N 3544 – 34078 (with Suffix „K“)
GROB G 103C TWIN III ACRO	S/N 34101 – 34203
GROB G 103C TWIN III	S/N 36001 – 36014

#### 1.3 Time of Compliance:

on holders discretion or during repair/ replacement

#### 1.4 Subject:

ATA-Code: 32-40            Wheels and Brakes

#### 1.5 Reason:

The actual installed master brake cylinders (MAGURA P/N 280.120 or 28322 with different shaped reservoirs) are no longer available. With this Service Bulletin the installation of an alternative master brake cylinder assy P/N 103C-5011 is approved.

#### 1.6 Concurrent documents:

N/A

### **1.7 Approval Note:**

These information or instructions relate to change no. OÄM 315-028 which has been approved under the authority of EASA Design Organisation Approval No. EASA.21J.030.

The technical information contained in this document has been approved under the authority of EASA Design Organisation Approval No. EASA.21J.030.

### **1.8 Accomplishment / Instructions:**

1.8.1 Remove rear seat shell.

1.8.2 Disconnect brake hose (item 1) from the master brake cylinder.

**NOTE: Pay attention that no brake fluid gets on to the composite structure.**

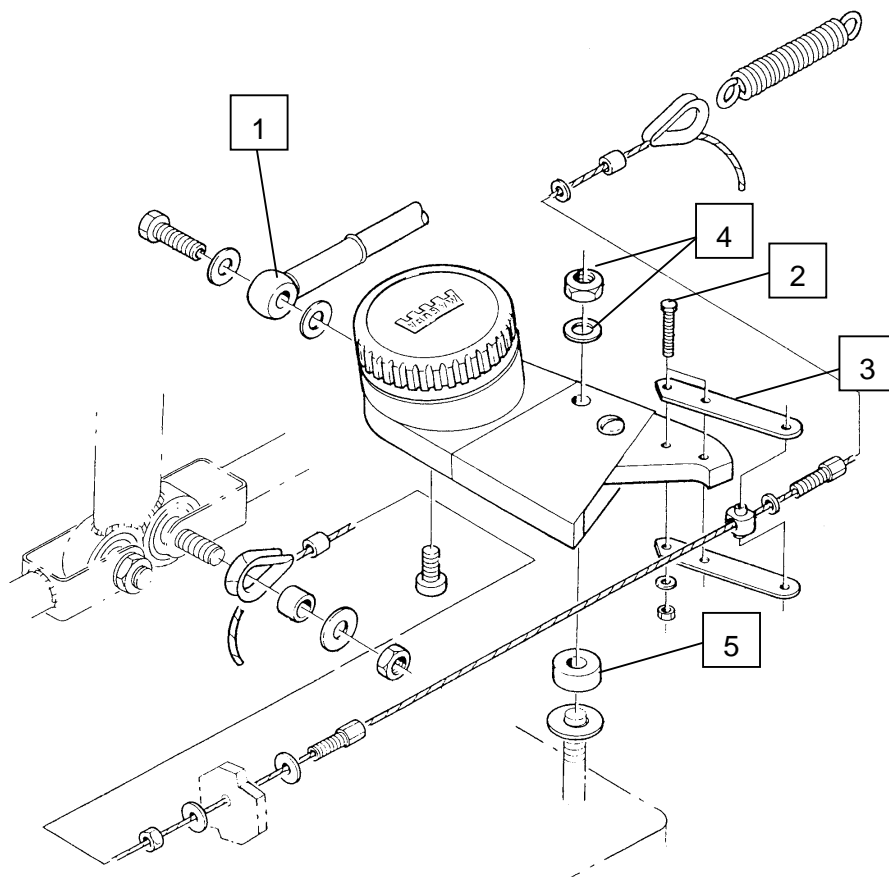
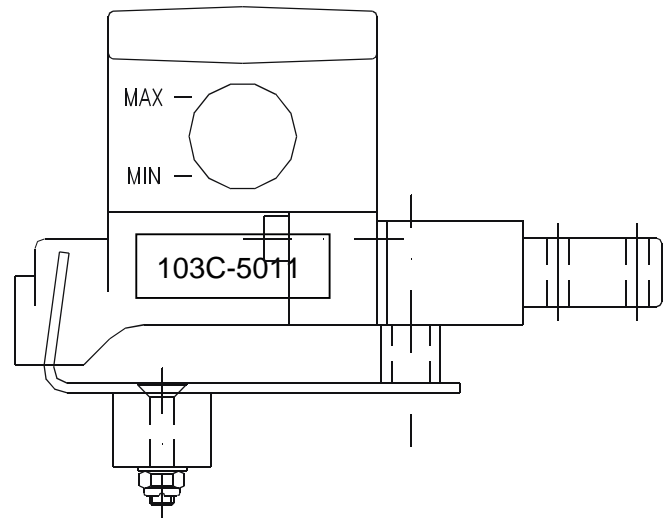
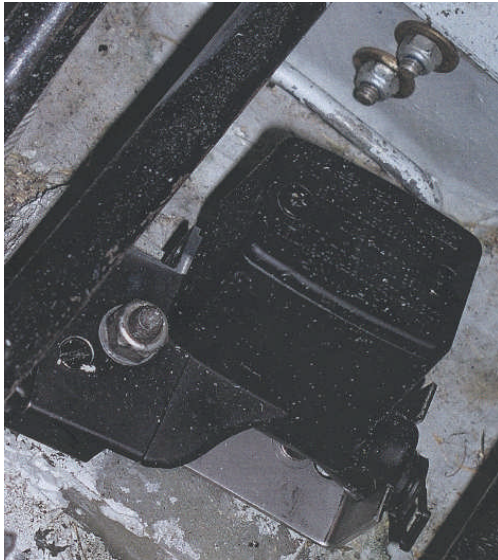


Fig. 1

1.8.3 Disconnect brake operating cable from the master brake cylinder by removing bolts (item 2) and plates (item 3). All items are required for the re-installation.

1.8.4 Remove nut and washer (item 4) and remove master brake cylinder. The bush (item 5) is required for the re-installation.

- 1.8.5 Install new master brake cylinder P/N 103C-5011 using a new nut (item 4, P/N LN 9348-M8). Standard torque 16 Nm.



- 1.8.6 Connect brake operating cable to the master brake cylinder by installing bolts (item 2) and plates (item 3). Use new nuts P/N LN9348-M5, standard torque 3,6 Nm.
- 1.8.7 Connect brake hose (item 1) to the master brake cylinder.
- 1.8.8 Bleed brake system and fill up system as required.

**NOTE:** Pay attention to use the correct brake fluid. Use only DOT3/DOT4.

- 1.8.9 Install rear seat shell.
- 1.8.10 Check brake system for proper function.

**1.9 Repetitive Actions:**

None

**1.10 Mass (Weight) and CG:**

negligible



## **II. PLANNING INFORMATION**

### **2.1 Material & Availability:**

The material required for the modification may be ordered from Grob.

Item	Part Number	Name	Qty.
1	103C-5011	Brake cylinder assy	1
2	LN9348-M8	Nut	1
3	LN9348-M5	Nut	2
4	DOT3/ DOT4	Brake fluid	AR

### **2.2 Special Tools:**

Brake bleeding device

### **2.3 Labour costs:**

approximately 1 hr.

### **2.4 Reference documents:**

N/A

### **2.5 Credit:**

N/A

## **III. REMARKS**

- 3.1 The correct execution of the instructions may be performed by a qualified tradesman and has to be certified in the logbook by an authorised inspector.
- 3.2 If you have sold your aircraft in the meantime, would you kindly pass this information on to the new owner and forward his address and aircraft S/N to us.
- 3.3 For questions and assistance please contact:  
Rudi Vodermeier, Head of Product Support,  
Tel.: +49 (08268) 998 139  
Fax: +49 (08268) 998 200  
e-mail: [productsupport@grob-aerospace.de](mailto:productsupport@grob-aerospace.de)