



SERVICE BULLETIN MSB 315-64/3

I. TECHNICAL DETAILS

1.1 Category:

Mandatory

1.2 Aircraft affected:

TWIN ASTIR	S/N 3000 - 3291
TWIN ASTIR TRAINER	S/N 3088 - 3291 (with "T")

1.3 Time of Compliance:

- 1.3.1. Instructions 1.8.1. through 1.8.3 immediately after receipt of this Service Bulletin
- 1.3.2. Instruction 1.8.4. Immediately after receipt of the revised Flight / Maintenance Manual pages

1.4 Subject:

ATA-Code: N/A Revised Limits of Operation

1.5 Reason:

Alert Service Bulletin 315-64/2 reduced the maximum admissible speed V_{NE} to 230 km/h, speed in rough air V_B to 170km/h and prohibited acrobatic flight for gliders modified in accordance with Service Bulletin 315-08. This Service Bulletin raises V_{NE} to the original 250 km/h. V_B however remains at 170 km/h, acrobatic flight remains prohibited.

This Service Bulletin provides the revised pages for the Flight - and Maintenance Manual.

Simple acrobatic flight (Looping, Turn, Lazy Eight, Chandelle) may be performed in accordance with the Flight Manual.

TWIN ASTIR
TWIN ASTIR TRAINER



Acrobatic flight, as authorized after optional installation of additional equipment (SB 315-08 for aircraft serial-number 3073 TWIN ASTIR, respectively 3088-T-2 TWIN ASTIR TRAINER), and in accordance with the supplement to the flight manual "Flight Manual for Acrobatic Flight, TWIN ASTIR, TWIN ASTIR TRAINER, GROB G103A TWIN II ACRO" (Issue July 1980), remains prohibited. The additional equipment required for acrobatic flight may remain installed in the aircraft.

This MSB 315-64/3 is the terminating action for all TWIN ASTIR / TWIN ASTIR TRAINER

1.6 Concurrent Documents:

ASB 315-64/2

1.7 Approval Note:

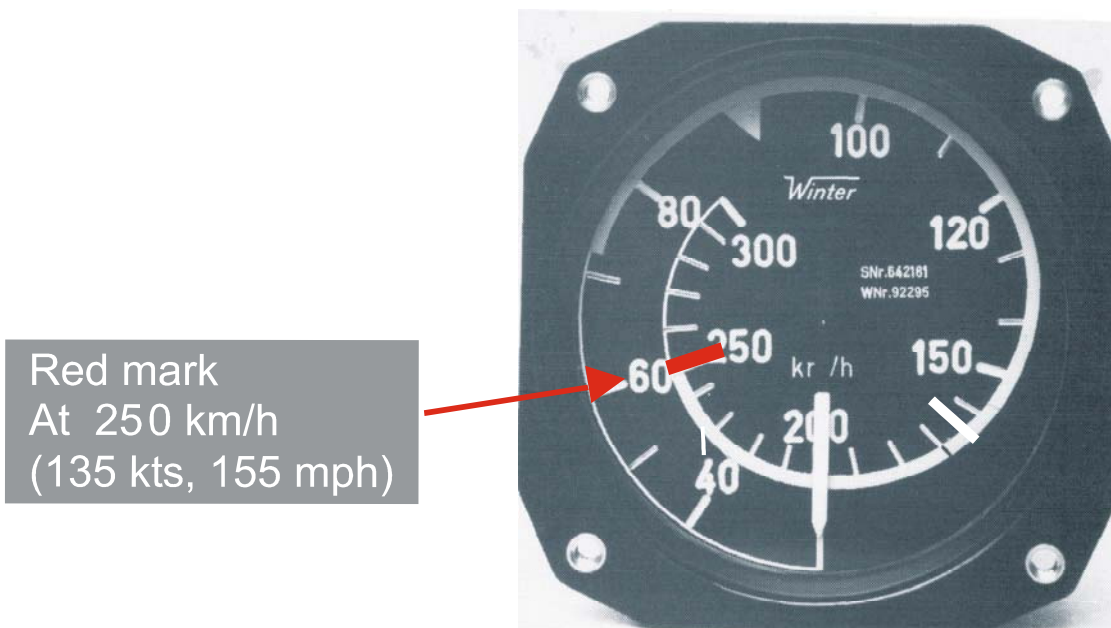
The technical information contained in this document has been approved under the authority of Design Organisation Approval No. EASA.21J.030.

1.8 Accomplishment / Instructions:

The maximum admissible speed in calm air (never exceed speed) is limited to $V_{NE} = 250$ km (135kts, 155mph), the same limits apply to V_{DF} (Speed with airbrakes extended). The maximum speed in rough air is limited to $V_B = 170$ km/h (92 kts, 105 mph). Complete the following actions.

1.8.1 Front & rear cockpit air speed indicator: Apply a red mark at **250 km/h (135 kts, 155 mph)**

TWIN ASTIR
TWIN ASTIR TRAINER



1.8.2 Replace Limitations Placard (front & rear cockpit) R/H side by new placard as depicted below:

Maximum Flying Weight				
Without Waterballast:		650 kp	1435	lbs
With Waterballast:		650 kp	1435	lbs
Airspeed Limits				
		km/h	kts	mph
Never Exceed:	V_{NE}	250	135	155
In Rough Air:	V_B	170	92	105
On Aerotow:	V_T	170	92	105
On Winch and Auto Launch:	V_W	120	64	74
Airbrakes Open:	V_{DF}	250	135	155
Manoeuvring:	V_A	170	92	105

1.8.3. Acrobatic flight, as authorized after optional installation of additional equipment (SB 315-08 for aircraft serial-number 3073 TWIN ASTIR, respectively 3088-T-2 TWIN ASTIR TRAINER), and in accordance with the supplement to the flight manual "Flight Manual for Acrobatic Flight, TWIN ASTIR, TWIN ASTIR TRAINER, GROB G103A TWIN II ACRO" (Issue July 1980), remains prohibited in accordance with ASB 315-64/2.

TWIN ASTIR
TWIN ASTIR TRAINER



1.8.4. The following revisions must be incorporated into the Flight / Maintenance Manual

Flight Manual:

TWIN ASTIR:	German Issue:	Revision 7, 14. Sept. 2004
	English Issue:	Revision 9, 14. Sept. 2004
	Canadian Issue:	Revision 9, 14. Sept. 2004

TWIN ASTIR TRAINER:	German Issue:	Revision 8, 14. Sept. 2004
	English Issue:	Revision 9, 14. Sept. 2004
	Canadian Issue:	Revision 9, 14. Sept. 2004

Maintenance Manual:

TWIN & TWIN ASTIR TRAINER:	German Issue:	Revision 8, 14. Sept. 2004
	English & Canadian Issue:	Revision 6, 14. Sept. 2004

1.9 Repetitive Actions:

None

1.10 Mass (Weight) and CG:

N/A

II. PLANNING INFORMATION

2.1 Material & Availability:

The revised pages for Flight & Maintenance Manual are attached to the Service Bulletin

2.2 Special Tools:

N/A

2.3 Labour costs:

approximately 0,5 hrs.

TWIN ASTIR
TWIN ASTIR TRAINER



2.4 Reference documents:

N/A

2.5 Credit:

N/A

III. REMARKS

- 3.1 The correct execution of the instructions may be performed by a qualified person and has to be certified in the logbook by an authorised inspector.
- 3.2 If you have sold your aircraft in the meantime, would you kindly pass this information on to the new owner and forward his address and aircraft S/N to us.
- 3.3 For questions and assistance please contact:

Michael Reinhold, Product Support,
Tel.: +49 (08268) 998 105
Fax: +49 (08268) 998 200
e-mail: m.reinhold@grob-aerospace.de

TWIN ASTIR
TWIN ASTIR TRAINER