

Subject: Exchange of the spiral pin in the spindle drive

Concerned: G 103 C TWIN III SL, S/N's 35001 - 35050

Urgency: before the next flight

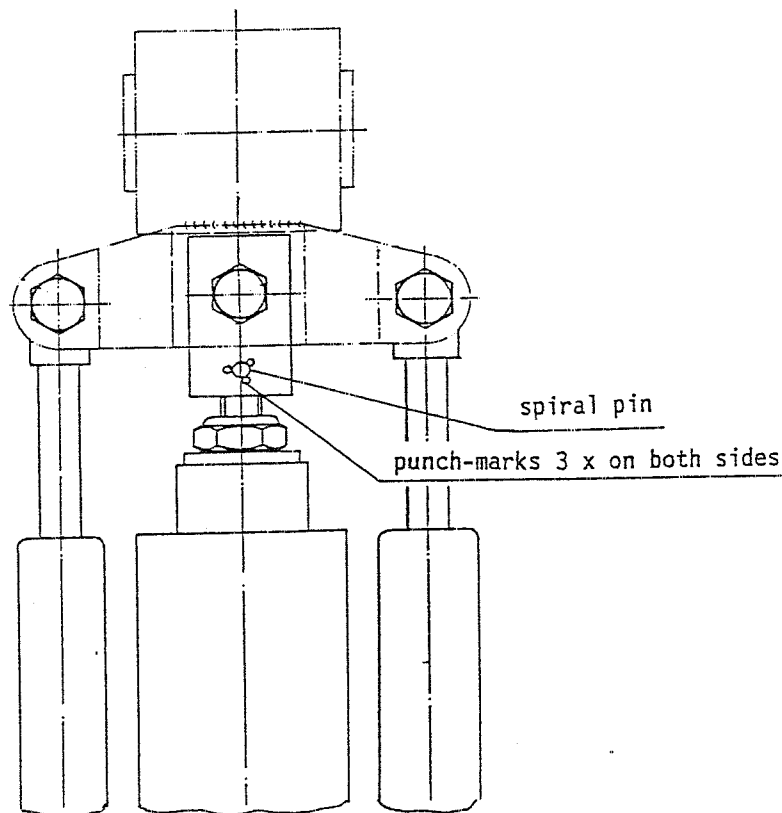
Reason: To prevent a loosening of the spiral pin in the spindle drive, the spiral pin must be exchanged and secured as a precautionary action.

Procedure: The spiral pin must be exchanged as follows:

- a. Extend the engine fully. Switch off ignition.
- b. Remove old spiral pin.

Note: If there are any problems during the removal of the spiral pin, contact the manufacturer.

- c. Drill up the hole to a dia. of 4 mm.
- d. Install the new spiral pin.
- e. Punch-mark the spiral pin three times on each side according to the sketch.



Material: The spiral pin will be delivered with the Service Bulletin.

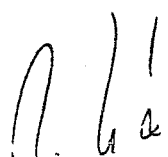
Weight and Balance: this is of no concern

- Remarks:**
1. The exchange of the spiral pin must be performed by a competent person or at an authorized aviation work shop and certified in the log book by an authorized inspector.
 2. If you have sold your motorglider in the meantime, would you kindly pass this information on to the new owner and forward his name and address and aircraft s/n to us.

Mattsies, 07. September 1992

LBA approved

This Service Bulletin was originally written in German and approved by the German LBA on the 15. September 1992 and is signed by Mr. U. Kopp. The translation has been accomplished to the best of our knowledge and judgement. In case of doubt, the German original is authoritative.



Dipl. Ing. R. Rischer
(Airworthiness engineer
certification staff)