



Subject: Inspection and, if necessary, exchange of the elevator push-rod III (103A-4244) or the elevator push-rod IV (103A-4694) respectively.

Effectivity: Gliders GROB G 103 A TWIN II ACRO s/n 3544 - 3878 (inclusive) (only with supplement "K").

Accomplishment:

- Instruction 1 before next take-off
- Instruction 2 together with instruction 1

Reason: Corrosion may occur in the lower mounting area of the described elevator push-rod through water of condensation. As a precaution, the elevator push-rod is inspected and, if necessary, exchanged.

Instructions: Instruction 1:

Inspection of the elevator push-rod

1.1 The relevant elevator push-rod is to be inspected in the lower mounting area for moisture escape and corrosion prior to the next take-off. For this purpose, the repair instructions 315-34 which are part of this Service Bulletin, have to be carried out.

1.2 If moisture escape or corrosion is noticed, instruction 2 has to be carried out prior to the next take-off.

1.3 If neither moisture escape nor corrosion are noticed, all further instructions are inapplicable after preservation of the push-rod (see repair instructions).

Instruction 2:

Exchange of the elevator push-rod

2.1 In case of moisture escape or corrosion, the elevator push-rod must be exchanged according to the repair instructions to Service Bulletin TM 315-34 prior to the next take-off.



Service Bulletin
TM 315-34

GROB G 103 A
TWIN II ACRO

Material: The material (elevator push-rod) as per the repair instructions to Service Bulletin TM 315-34 is to be procured from the manufacturer.

Weight and Balance: No effect

Remarks: Instructions 1 and 2 can be carried out by qualified mechanics. The proper execution has to be certified in the log-book by an authorized inspector class 3.

Mattsies, 8 Dec. 1987
signed Dipl.-Ing. *[Signature]* R. Rischer

LBA-approved on:
gesehen 25.7. Vol

P.S.: In case you have sold your glider meanwhile, we ask you kindly to give this information immediately to the new owner and to let us know his address and serial number.

The translation has been done by best knowledge and judgement. In any case or doubt, the German original is authoritative. The German original of this Service Bulletin has been approved by the LBA under the date of 16 December 1987 and is signed by K. Volosciuk.



Repair Instructions No. 315-34 pertain to Service Bulletin TM 315-34 and relate to inspection and, if necessary, exchange of the elevator push-rod III (103A-4244) or elevator push-rod IV (103A-4694) respectively.

Material: Corrosion preventative (common trade mark)
Elastic stop nuts
If necessary: new elevator push-rod

Tools: Common tool set
Drill dia. 6 mm

Sequence of Operations: In the order of the repair instructions

Note: It is good practice, before dismantling anything, to make a mental note or small sketch of how the things fit together, so that later reassembly is easier. Make a precise note also of such minor items such as screws, for instance.

For inspection (for exchange) of the elevator push-rod, the horizontal tail must be dismantled.

Sequence of Operations:

1. Remove rudder
2. Remove elevator push-rod (elevator push-rod III 103A-4244 or elevator push-rod IV 103A-4694 respectively)
3. Inspect the elevator push-rod for water of condensation and corrosion as follows:
 - a) The elevator push-rod must be drilled on the lower fork head end according to the drawing (hole dia. 6 mm)
 - b) Check whether water of condensation comes out. In the affirmative, the elevator push-rod must be replaced by a new one.
 - c) In the negative, the tube must be knocked up to 100 mm after the lower fork head end (e.g. with the wooden handle of a screw driver). If by doing so, rust is falling out of the hole, the elevator push-rod must be replaced by a new one.
4. In case a new elevator push-rod is needed, the old one must be returned to the manufacturer.



5. In case the existing elevator push-rod can be used, it must be treated inside with the above mentioned corrosion preventative before installation. The hole remains open.

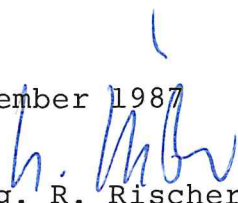
The reassembly is carried out in reverse order. New elastic stop nuts must be used thereby.

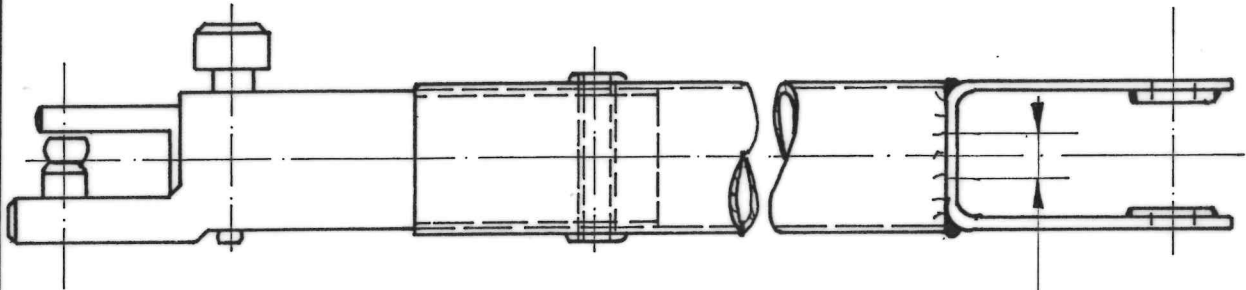
6. Functioning of the elevator and the rudder must be checked after the reassembly. Ensure that the controls move in the correct direction.

7. Finally, the rudder and elevator deflections are to be checked according to the maintenance manual and, if necessary, adjusted anew.

The execution of the instructions has to be certified in the log-book by an authorized inspector class III immediately following completion.

Mattsies, 8 December 1987


signed Dipl. Ing. R. Rischer



ELEVATOR
PUSH-ROD III

103 A - 4244

ELEVATOR
PUSH-ROD IV

103A - 4694

HOLE DIA. 6mm

ALTERNATIVE
FORK HEAD

